



OBERDORFER®

An Ingersoll Rand Business

Model 500 Bronze Close Coupled Centrifugal Pump



Features

- Pipe Size: 3/8"
- All Bronze Pump Castings
- Stainless Steel Motor Shaft
- Mechanical Seal
- Extremely Quiet
- Will handle difficult solvents with proper seals: Viton® (S10)
- Long Life
- Do Not Require Relief Valves
- Will Handle Contaminated Liquids

Liquids

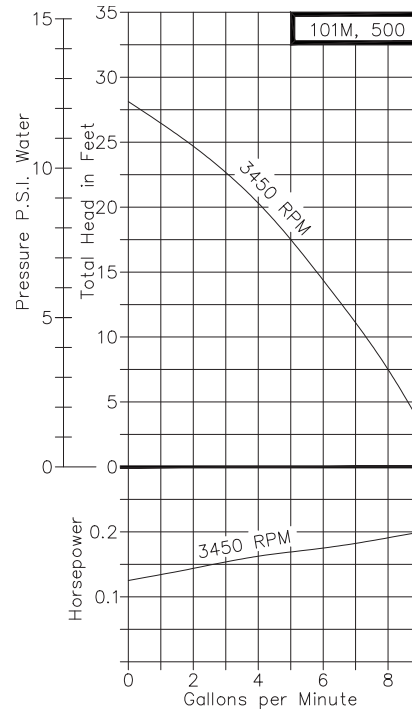
The special pump alloys used provide corrosion resistance to many liquids including water, water solutions, and a wide range of commercial chemicals. Questions as to the chemical compatibility of special liquids should be referred to the factory.

Viscous liquids with a maximum viscosity of 2000 Saybolt Seconds Universal can be pumped. However, when pumping viscous liquids as compared with water, a reduction in flow and pressure occurs and the required horsepower rate increases.

Liquids heavier than water require additional horsepower in direct proportion to the increase in specific gravity. Liquids contaminated with small solids or abrasives can be handled, but a reduction in mechanical seal life must be expected.

Performance

Capacity Water at 60°F



Characteristics

This close coupled pump uses a standard NEMA C Flange Jet Pump Motor with weld-on base and threaded shaft end to accept the pump impeller. Single phase motors are non-reversible and are wired for the proper pump rotation which is counter-clockwise looking at the inlet end of the pump. Three phase motors must be checked out for proper rotation when pump is installed.

Interchanging of any 2 wires in a 3-phase system will reverse motor rotation.

The pump uses a mechanical type shaft seal with a Buna rubber element. It is suitable for water, oils, and some mild solvents. It is limited to 212° F. Viton® seals are available for severe solvents, difficult chemicals, and elevated temperatures.

These centrifugal pumps are not self-priming. They must be installed below the liquid level so that the liquid flows to the pump by gravity (flooded suction). However, if a foot valve is used at the beginning of the suction line and all air is bled from the pump by manual priming, the pump will lift on the suction side up to 15 feet. Such a system relies entirely on a non-leaking foot valve for starting capability.

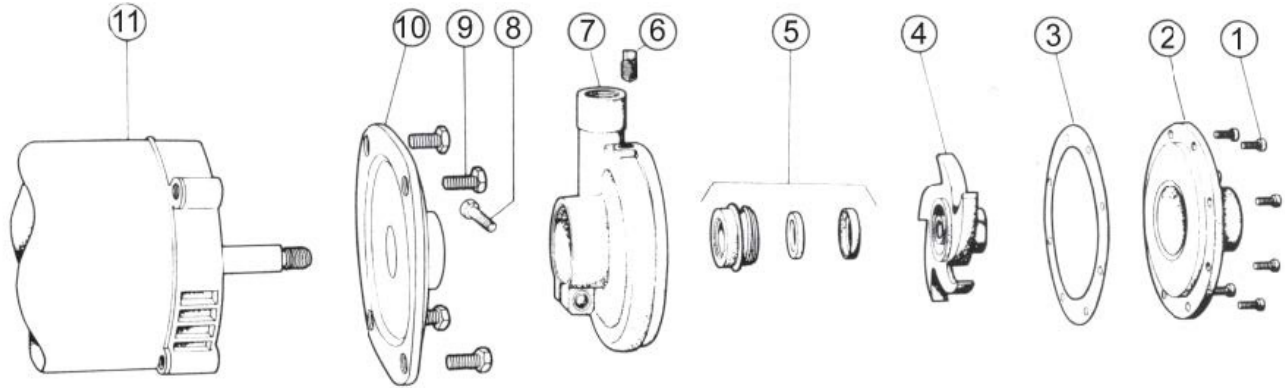
The flow of a centrifugal pump can be conveniently controlled by a throttling valve in the discharge line without the need for a relief valve. In centrifugal pumps, the horsepower demand will decrease as the pressure increases. Maximum horsepower occurs with a wide open discharge.



OBERDORFER®

An Ingersoll Rand Business

Exploded View and Parts List



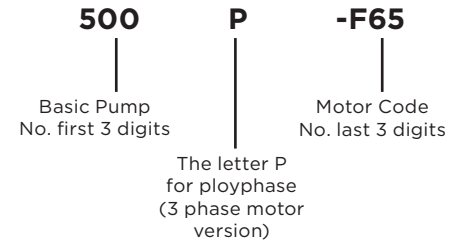
	1	2	3*	4*	5*	6	7	8	9	10	11	12**	Repair Kit
	Screw	Cover	Gasket	Impeller	Seal Assy	Plug	Body	Screw	Screw	Adapter	Motor	Screw Set	
Model	Qty. 6	Qty. 1	Qty. 1	Qty. 1	Qty. 1	Qty. 1	Qty. 1	Qty. 1	Qty. 4	Qty. 1	Qty. 1	Qty. 1	
OB500	OB5385	OB6483	OB6502	OB6476	OB32154	OB6052	OB6475	OB5595	OB5411	OB7611	---	---	OB10694 (Single Phase)
OB500P	OB5385	OB6483	OB6502	OB7351	OB32154	OB6052	OB6475	OB5595	OB5411	OB7611	---	OB9849	OB11062 (Three Phase)

* Repair kit contains items 3, 4, 5, 12. ** Parts not shown

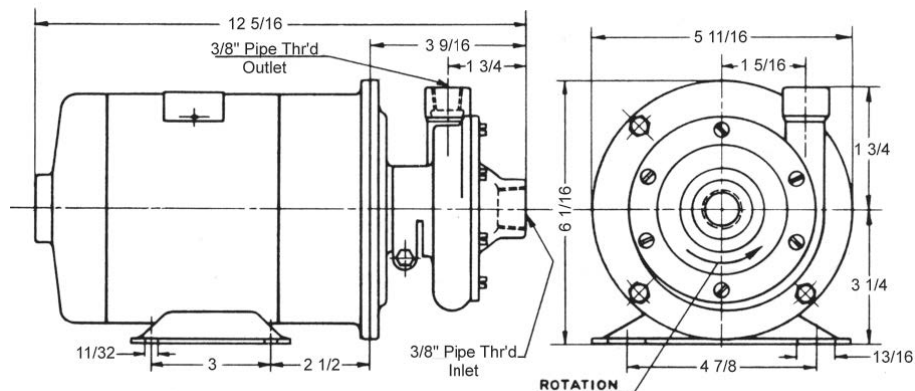
Pump and Motor Options

Pump No.	Electric Motor	Motor Shaft	Part No.
OB500-F13	3450 RPM, 1/3 HP, Single, 115V, ODP	Stainless Steel	OB5859
OB500-F20	3450 RPM, 1/3 HP, Single, 115/230V, TEFC	Stainless Steel	OB7986
OB500-F21	3450 RPM, 1/3 HP, Single, 115/230V, XP	Stainless Steel	OB8214
OB500-J19	3450 RPM, 1/2 HP, Single, 115/230V, ODP	Stainless Steel	OB5860
OB500-J20	3450 RPM, 1/2 HP, Single, 115/230V, TEFC	Stainless Steel	OB7976
OB500-F57	3450 RPM, 1/3 HP, Three, 220/440V, ODP	Stainless Steel	OB6996
OB500-F68	2850 RPM, 1/3 HP, Three, 220/380V, TEFC	Stainless Steel	OB8654
OB500-J58	3450 RPM, 1/2 HP, Three, 220/440V, TEFC	Stainless Steel	OB9214

Numbering



Dimensions



12500 South Pulaski Road
Alsip, IL 60803, USA
Phone (800) 448.1668